

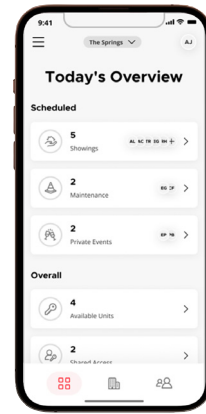
Credentials



EV2-4k Access Card
4000



DF EV2-8k & Prox Fob
4130



Bluetooth Phone
is also a Credential

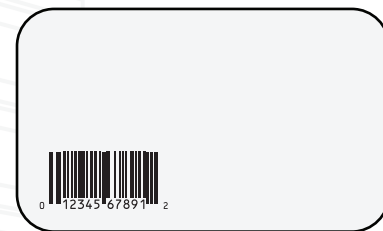
Specifications

Technical Specifications		
	FOB	Cards
Open architecture platform	MIFARE DESFire EV3	
Security Level	EAL 5+	
RF Technologies	13.56 MHz	
LEAF Compatibility	Fully Compatible	
Working Environment	No Limitation	
Memory Size	8 Kbyte	4 Kbyte
Read Range (Reader dependent)	up to 1"	up to 3"
Temperature Range	-13° to 176° F -25° to 80° C	-50° to 160° F -10° to 71° C
Dimensions	1.57" x 1.22" x .19" 39.9 mm x 31.0 mm x 4.9 mm	3.37" x 2.13" x .03" 85.6 mm x 54.0 mm x .8 mm
Material	Polycarbonate	PVC + PET
Color	Black ring white center	White
Attachment	Integral clip/ring space	NA
Warranty	3 Year	Lifetime

Construction Mode Credentials



C-User EV2 Card
4042



C-Master EV2 Card
4052

Kwikset UNITE

Experience convenience, connectivity and seamless access control with the Kwikset UNITE™ EAC Platform. Electronic locks, cloud-based web and mobile software, smart credentials and smart reader controllers work together to deliver a simple yet comprehensive solution for managing your multifamily property.

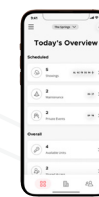
Kwikset UNITE™ Electronic Locks

Kwikset UNITE™ electronic locks are the smart multifamily property upgrade for your mechanical locks.

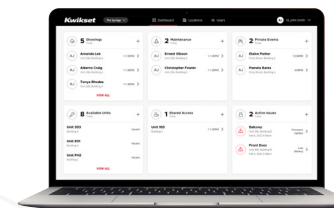
Kwikset UNITE™ Electronic Locks provide multifamily property managers and tenants with a convenient, stylish and efficient way to manage resident door access. They come in a standard lock and interconnect variant and can be controlled by mobile, desktop or physical credentials (fob or card). Kwikset's trusted electronic locks and intuitive software platform offer a cohesive, simple and seamless access control experience.



3 Easy Ways to Engage



Phone App

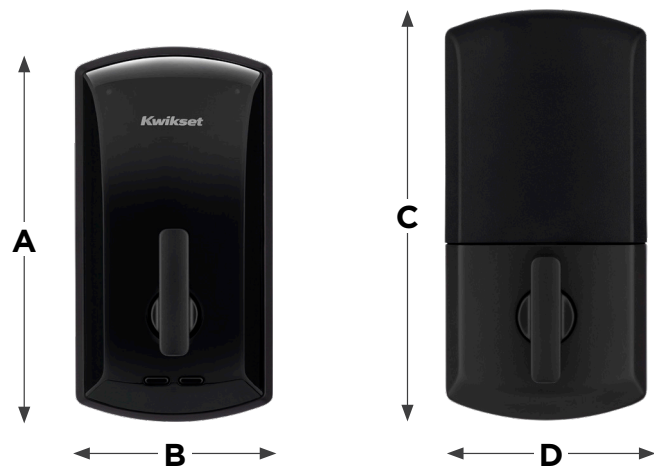


Desktop Portal



Card/FOB

Deadbolt Model #: 1000



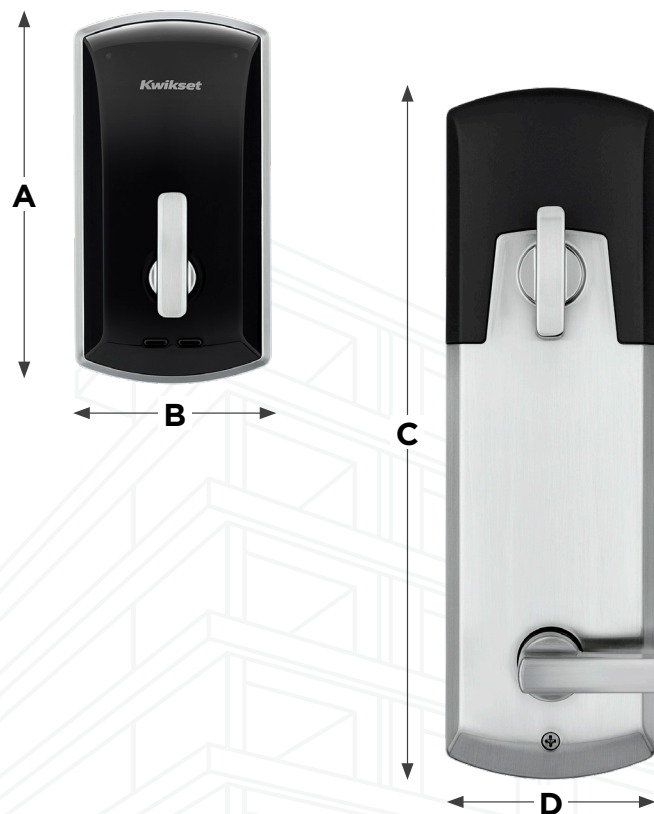
Dimensions

Design	A	B	C	D
Deadbolt	5.346"	2.856"	5.648"	2.849"

Finishes Available in split finishes



Interconnect Model #: 1100



Dimensions

Design	A	B	C	D
Traditional	5 9/32"	2 13/16"	8 1/4"	2 13/16"
Contemporary	5 9/32"	2 13/16"	9 3/4"	2 13/16"

Finishes Available in split finishes



Interconnect Lever Options



Interconnect Rose Options



Finishes



Specifications

Mechanical Specifications

Deadbolt & Interconnect

Materials	All-metal chassis and escutcheon
Door thickness	1 3/8" to 1 3/4" (thick kits available up to 2 1/4" for DB, up to 2" for IC)
Backsets	Deadbolts and latches (IC) adjustable to fit 2 3/8" or 2 3/4" backsets
Latch Plates	1" x 2 1/4" square & round corner (round standard, square in box)
Deadbolt	Manual Throw Deadbolt 1" (25 mm) tapered throw
Deadbolt Strike Package	Round & Square corner, 1 1/8" x 2 3/4" Round & Square corner, Full lip, 1 5/8" x 2 1/4" (lip length: 11/8") Additional options available.
Bore	2 1/8"
Stile Width	Minimum 4 1/2" stile for 2 3/8" backset, minimum 5" stile for 2 3/4" backset
Battery Cover	Snap-to-Secure cover. No tools required.
Thumb-turn	Spring-loaded return to vertical

Interconnect Only

Interconnect Size	5.5" and 4.0" CTC (center to center)
Anti-microbial	Microban™ on all levers (IC). Excluding 26 & 26D
Lever Strike Package (IC Only)	Square corner, T-strike, box, 1 1/8" x 2 3/4" Full Lip Square Corner, 1 5/8" x 2 1/4" Full Lip 1/4" Round Corner, 1 5/8" x 2 1/4" Additional options available
Handing	Field reversible (1100 IC)

Electronic Specifications

Users Capacity	Up to 500 users per lock (additional users with software)
Audits Capacity	Up to 1000 events
Visual and Audible Communications	Exterior LED (red, amber, green) and Audible indicators (field configurable)
Wake-up	Responds to host command in <5 seconds
Communication	BLE Bluetooth RFID (built-in reader)
Connectivity options	Mobile (send updates at the lock) No-Tour with enroll reader & smart credential Off-line No touring: Mobile/app shares updates w/ lock
Available status signals	Battery status
Power	4 AA Batteries Easy access 9v Back-up ports Life Off-line: Up to 2 years Life BLE Credential enabled: Up to 1 year
OTA Firmware Upgrades	Available
Memory	Non-volatile memory: Retains data w/battery removed
Diagnostics	Diagnostics with software
Operating humidity	0 - 100% non-condensing
Waterproof	Exterior
Operating Temperature	Exterior: -31° to 151°F (-35° to 66°C) Interior: 14° to 122°F (-10° to 50°C)

Certifications

1000 DB: ANSI/BHMA A156.36 Grade 2.
1100 IC: ANSI/BHMA A156.12 Grade 2
ANSI/BHMA A156.25.
Industry Canada RSS-247.
ADA compliant - ANSI A117.1
UL 90 minute, Canada UL 20-minute wood door rated
Florida Building Code HVHZ
FCC Certification 15C & CE: RE 2014/53/EU
AES-256 Bit encryption

Warranty

Mechanical and Finish: Limited Lifetime
Electronics: 2-year limited electronics